



Vertical multi-deck

GOA

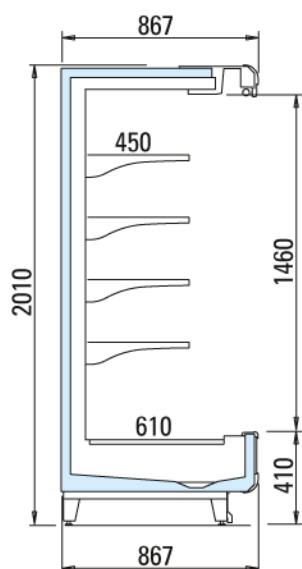


YOUR NATURALLY INNOVATIVE PARTNER FOR RETAIL SOLUTIONS



into the World

Goa	Length with ends	Length without ends	Working temperature	Horizontal display surface	Weight
	mm		°C	m ²	kg
1250	1330	1250	MEAT 0°C/+2°C DAIRY +2°C/+8°C	2,99	160
1875	1955	1875		4,48	230
2500	2580	2500		5,98	330
3750	3830	3750		8,97	480

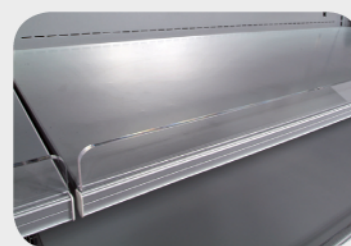


The new Goa line is the ideal solution for small and medium store areas with construction features that ensure a high filling capacity with reduced dimensions. The simple design and careful attention to details make this cabinet very interesting even for the most demanding customers. Goa is a vertical wall cabinet open at the front, prearranged for food products with a remote condensing unit.

It is suitable for preserving and self-service sales of deli meats or milk products. Available heights are: 2000-2016 mm



Transparent price-holder AMX shelf.



Plexi front riser.



Nightblind